

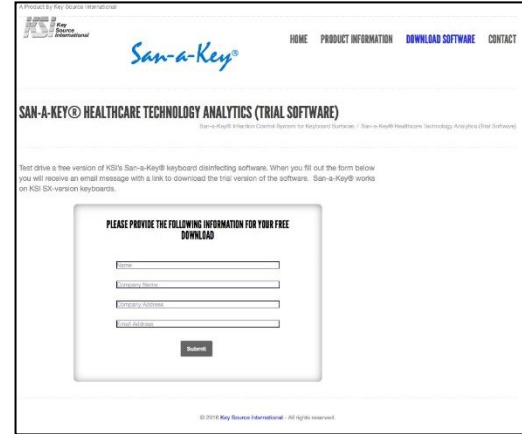
Installation and Setup

Step #1:

<http://sanakey.com/download/>

Go to the download page, fill out the form, click submit on the form.

THANK YOU FOR REGISTERING!
PLEASE CHECK YOUR EMAIL FOR
YOUR LINK TO YOUR FREE DOWNLOAD.



The screenshot shows the San-a-Key website's download form. The page title is "SAN-A-KEY® HEALTHCARE TECHNOLOGY ANALYTICS (TRIAL SOFTWARE)". Below the title, there is a form titled "PLEASE PROVIDE THE FOLLOWING INFORMATION FOR YOUR FREE DOWNLOAD". The form contains four input fields: "Name", "Company Name", "Company Address", and "Email Address". A "Submit" button is located below the form. The website header includes "San-a-Key®" and navigation links for "HOME", "PRODUCT INFORMATION", "DOWNLOAD SOFTWARE", and "CONTACT".

Step #2: Check your email and click on the provided link

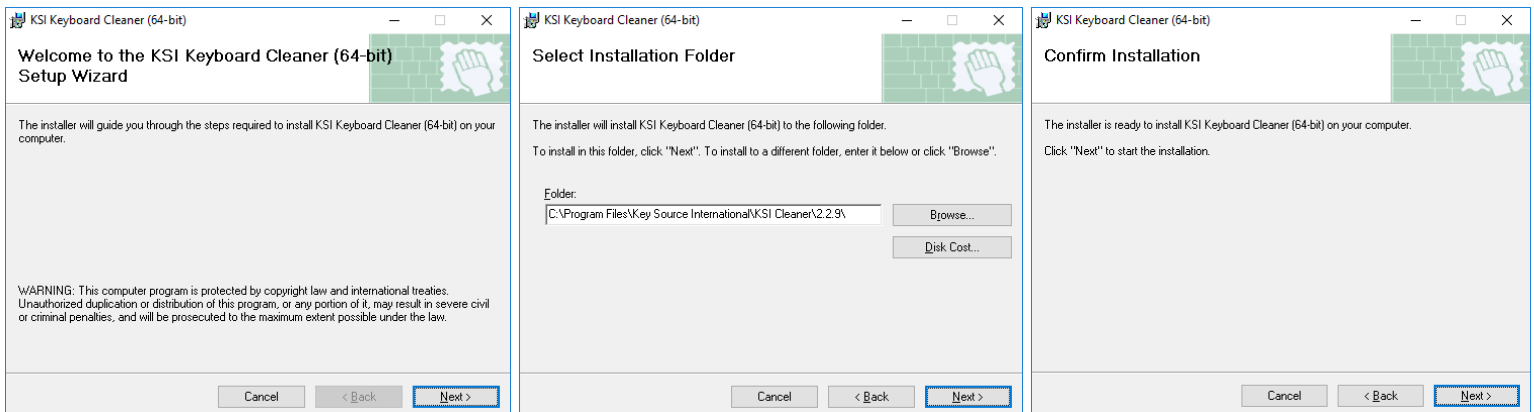
Thank you for your interest in our San-a-Key® FREE Software Download. Below you will find the link to your download file. We hope you will enjoy it.

<http://sanakey.com/san-a-key-keyboard-disinfecting-software/?ver=7659cf18d938c3e428d22ff859f09e55e510c2e0>

Thank You

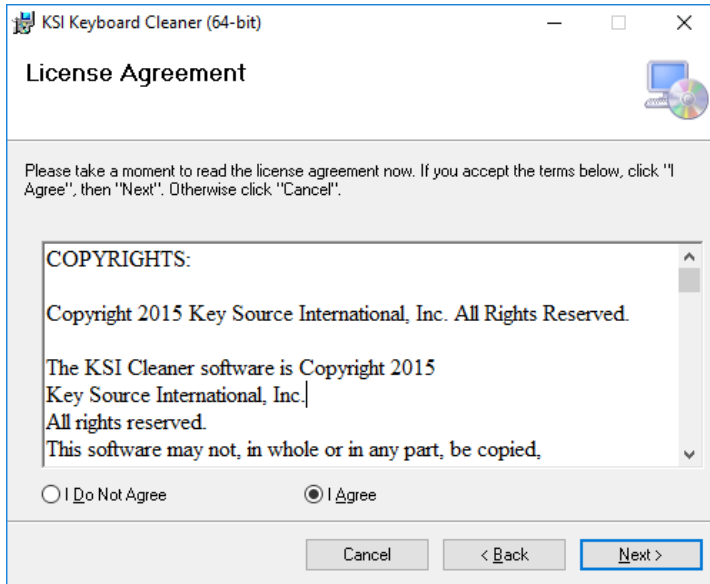
Step #3:

The installation will show information about the software. Generally, no changes from the default settings are needed. Click on the 'Next' button in each of the first three dialog boxes.

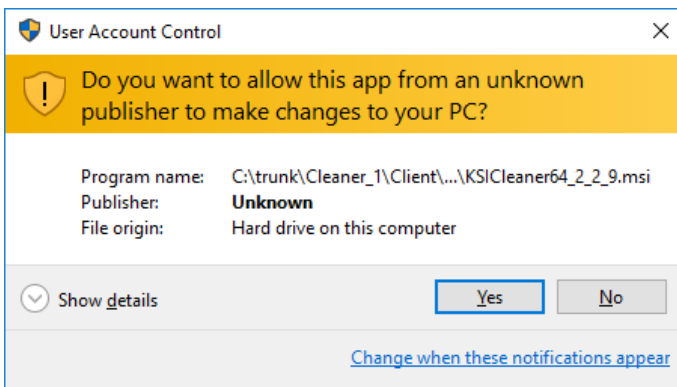


Step #4:

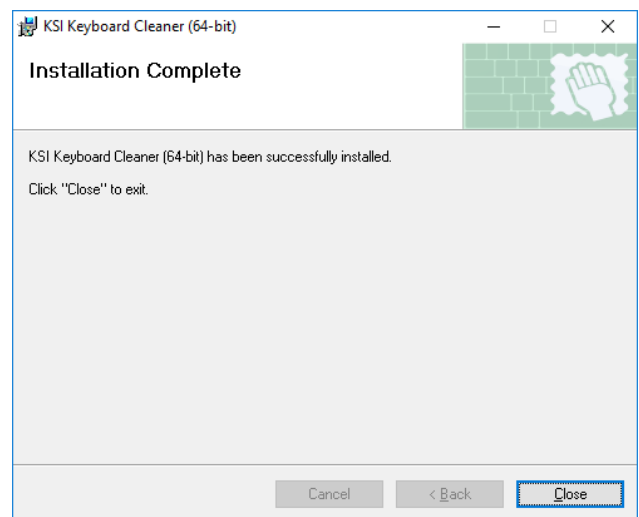
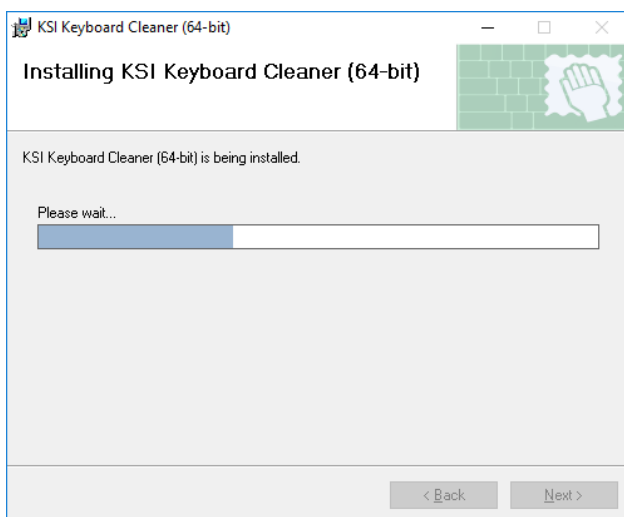
After scrolling through and reading the license agreement, select the 'I Agree' button, and then click on the 'Next' button.



Click on the 'Yes' button of the 'User Account Control' dialog box.

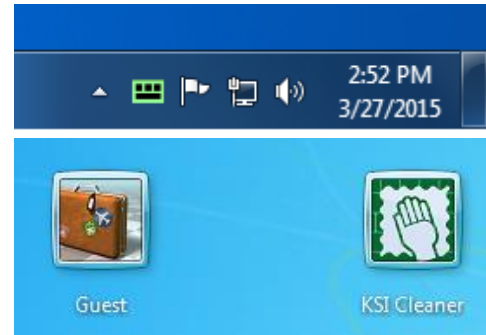


As the software is installed, a progress bar will be displayed, followed by the 'Installation Complete' message.



The software is designed for specific keyboards available from Key Source International. The software will not function without one of these keyboards. It is recommended that you plug in your KSI keyboard before you install the software.

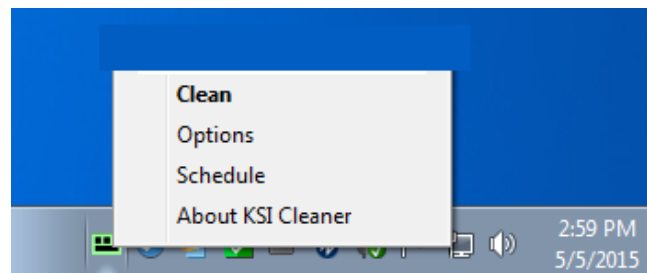
After the software is installed, you will see a new icon in the notification area (system tray) on the far right side of the task bar. This icon lets you know that the KSI Keyboard Cleaner is running.



If the KSI Keyboard Cleaner credential provider is installed, when you log out, you will see a new tile on the Windows login screen. The cleaner software is also running during the login process, so you can clean your keyboard at any time.

Cleaning Menu

A right mouse button click on the KSI tray icon will reveal the cleaner menu. A left mouse button click on a menu item allows you to configure the software, or to clean the keyboard.

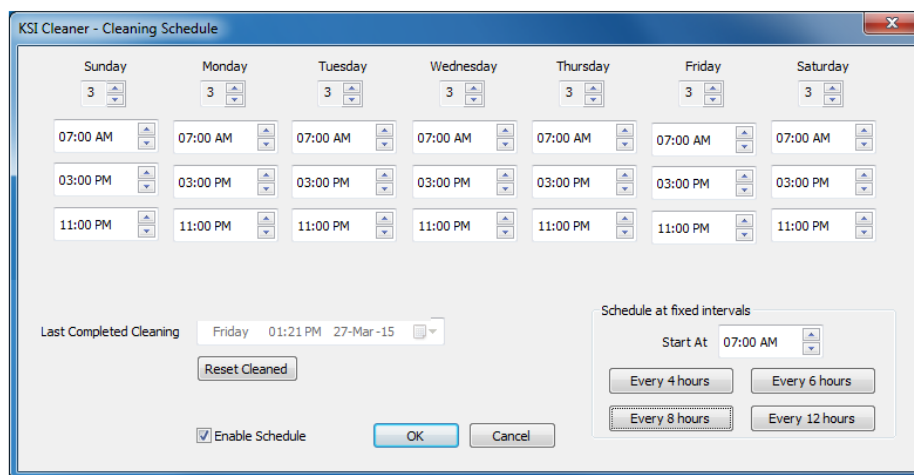


Cleaning Schedule

The KSI Keyboard Cleaner software allows you to create a weekly schedule for keyboard cleaning. The schedule consists of a set of times for each day of the week. The software will remind you to clean the keyboard at each of these times. You can create or change a schedule at any time.

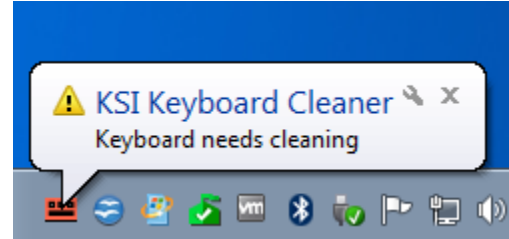
To view or change the schedule, select the 'Schedule' menu item in the KSI tray menu.

If the 'Enable Schedule' check box on the lower left isn't checked, check it by using the left mouse button. You can create a schedule at fixed hourly intervals using the user controls on the lower right. To adjust the number of cleanings for different days, use the number controls at the top. Change each time individually by using the time controls. Finally, press the OK button to save your schedule.



Cleaning Reminders

If the scheduling feature is enabled, the KSI notification icon will remind you to clean the keyboard by changing color. A yellow color indicates that a scheduled cleaning time is approaching. A red color indicates that a scheduled cleaning is due, or past due. A notification message or animation may also occur. A complete cleaning of the keyboard will result in the notification icon returning to its green color.



Cleaning the Keyboard

There are several ways to start a cleaning cycle. The red button at the top of the keyboard (the cleaning button) can be pressed at any time to start a cleaning cycle. The 'Clean' option in the KSI notification menu will also start a cleaning cycle, as will using the left mouse button to double click on the KSI notification icon, or to click on a cleaning notification message. When a cleaning cycle starts, an image of your keyboard will appear on the screen.



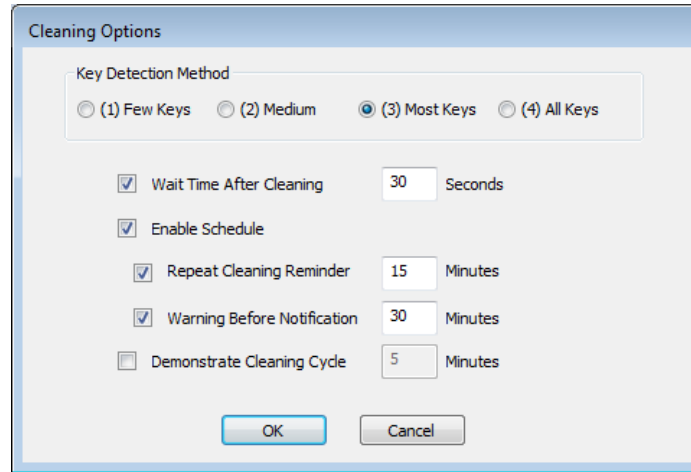
As you clean the keyboard, the KSI Keyboard Cleaner software will detect which keys have been pressed, and the red color on those keys will be removed. When all keys have been cleaned, a status bar indicator will appear which shows the 'wait-time' to complete the cleaning cycle. Do not touch the keyboard during the wait-time.



When the status bar indicator is finished, the keyboard image will disappear, and the cleaning cycle will be complete. To terminate the cleaning cycle early, position the cursor somewhere on the desktop and click one of the mouse buttons, or use the left mouse button to click on the [CANCEL] button. To cancel during the 'Wait' period, click on the [CANCEL] button, or press the [Esc] key. Also, the cleaning cycle can always be terminated by pressing the red cleaning button.

Cleaning Options

Selection of the 'Options' item from the KSI notification menu will show the Cleaning Options.



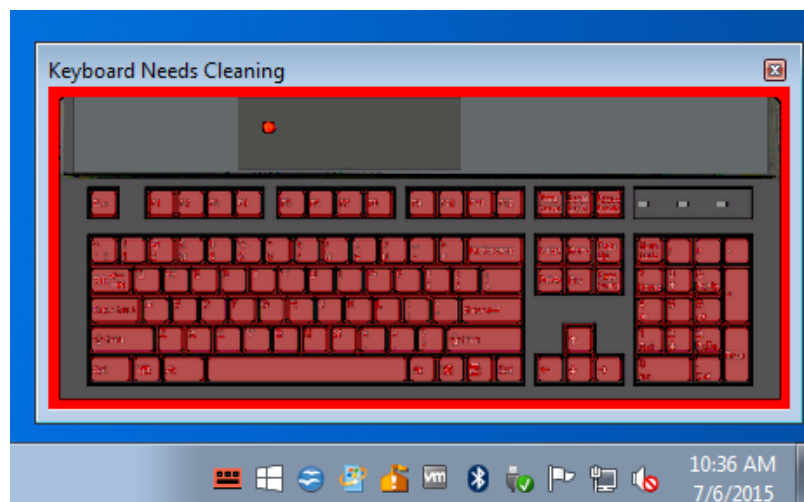
Cleaning Method: Determines how many keys need to be pressed and registered by the software to complete a cleaning cycle.

Wait Time After Cleaning: The time, after cleaning is completed, that the keyboard should not be touched.

Enable Schedule: Turns the cleaning schedule feature on or off. This option can also be set in the Cleaning Schedule dialog.

Repeat Cleaning Reminder: Sets the number of minutes between cleaning reminders. If the software determines from the schedule that a cleaning is required, it will remind the user using the KSI notification icon. The reminder will be repeated at the specified interval until a cleaning cycle is completed.

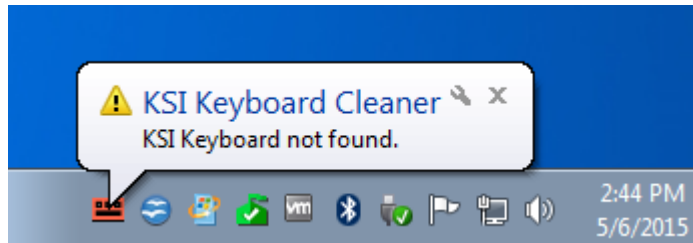
Enhanced Notification: Replaces the standard notification message with a small image of the keyboard. Clicking on the keyboard image will start the cleaning cycle.



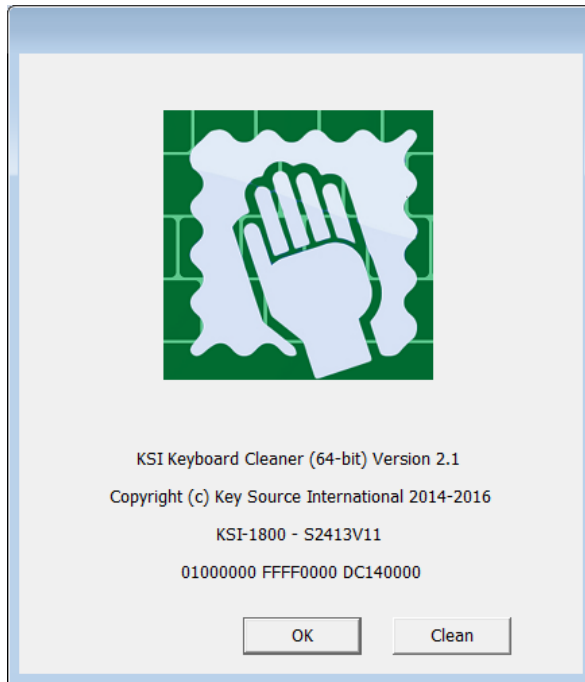
Warning Before Notification: The KSI notification icon will change color to yellow at the specified interval before the scheduled cleaning time.

Keyboard Detection

When the KSI Keyboard Cleaner software starts, it looks for a KSI keyboard that works with the software. If an appropriate keyboard is not found, a notification will occur. This notification can occur when you install the software, when you log in, or if the keyboard is unplugged.



Make sure your KSI keyboard is plugged into the system, and then select the 'Find Keyboard' or 'About KSI Cleaner' menu item in the KSI notification menu. This will show information about the KSI software. If the KSI keyboard can't be found, the message "Unknown Keyboard" will be displayed. If an appropriate KSI keyboard is found, information about the keyboard will be displayed. It is not necessary to restart Windows or the software after plugging in a keyboard.



The keyboard information indicates that the keyboard is a KSI-1800 series, with 'S2413V11' firmware, and with a serial number of '01000000 FFFF0000 DC140000'.